

Natural and Artificial Selection



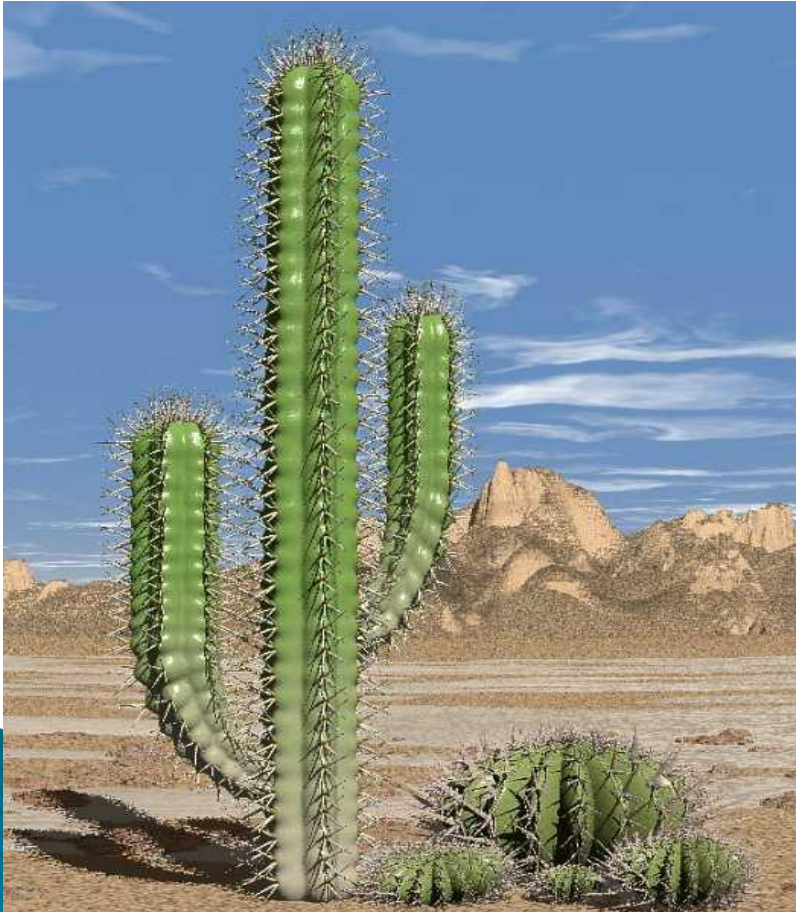
Adaptation

- ▶ A characteristic or feature of a species that makes it well suited for survival or reproductive success in its environment



Adaptation

- ▶ Explains why the cactus can be successful in the desert



Survival of the Fittest

- ▶ Herbert Spencer
- ▶ This phrase has been used to describe Darwin's theory
- ▶ Is this misleading?



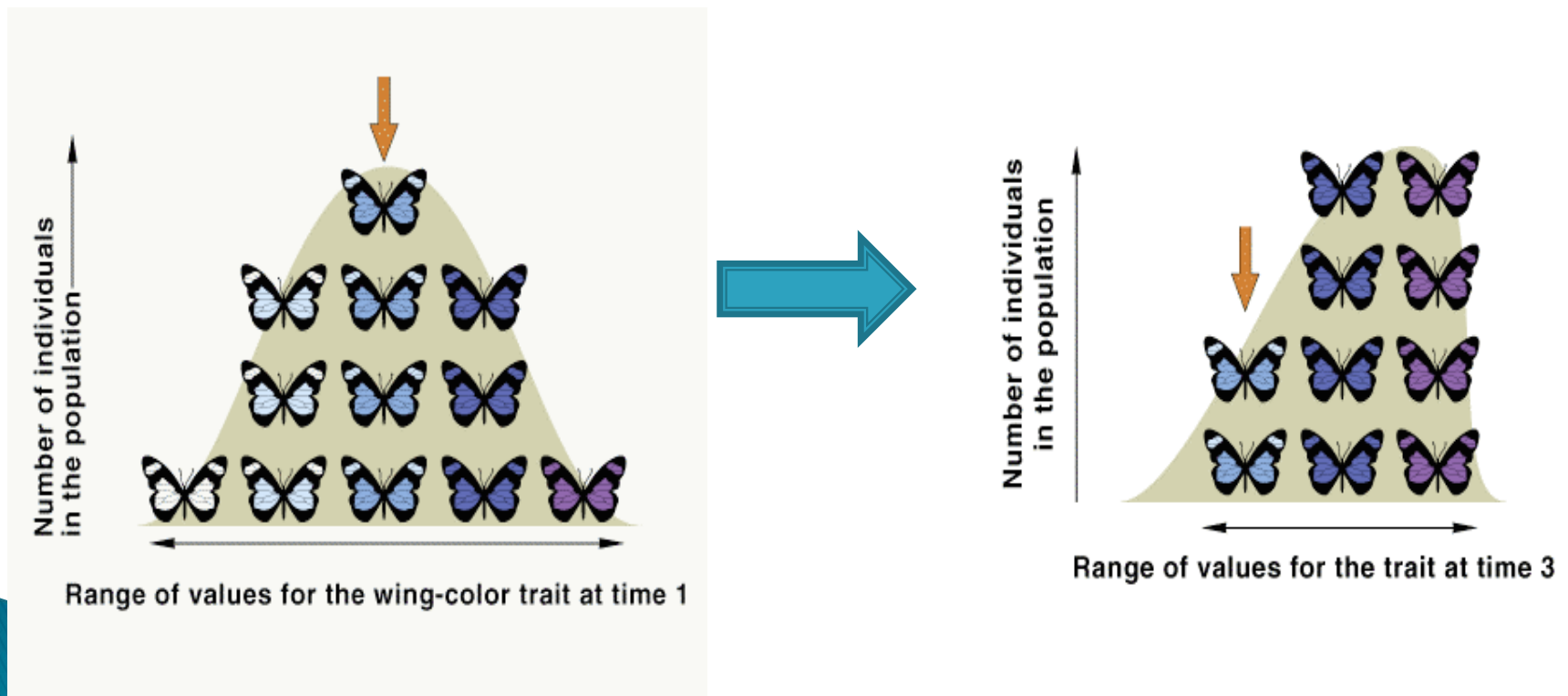
Types of Selection

- ▶ Directional Selection
- ▶ Stabilizing Selection
- ▶ Disruptive Selection
- ▶ Sexual Selection

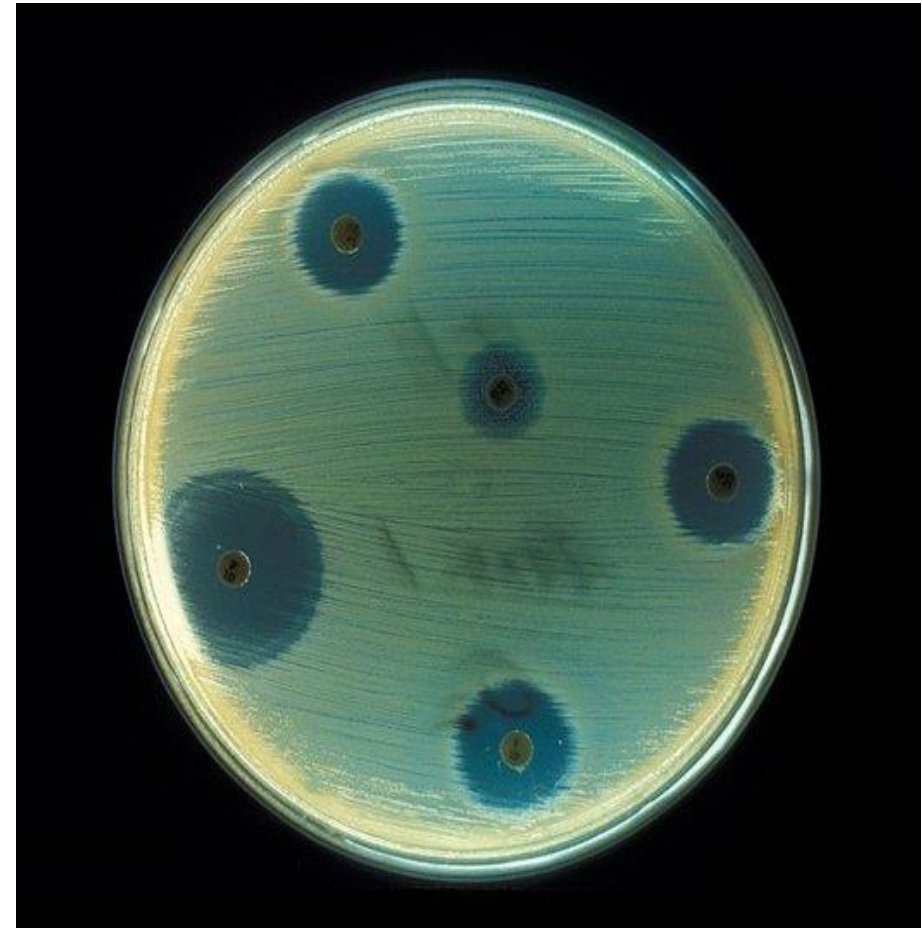
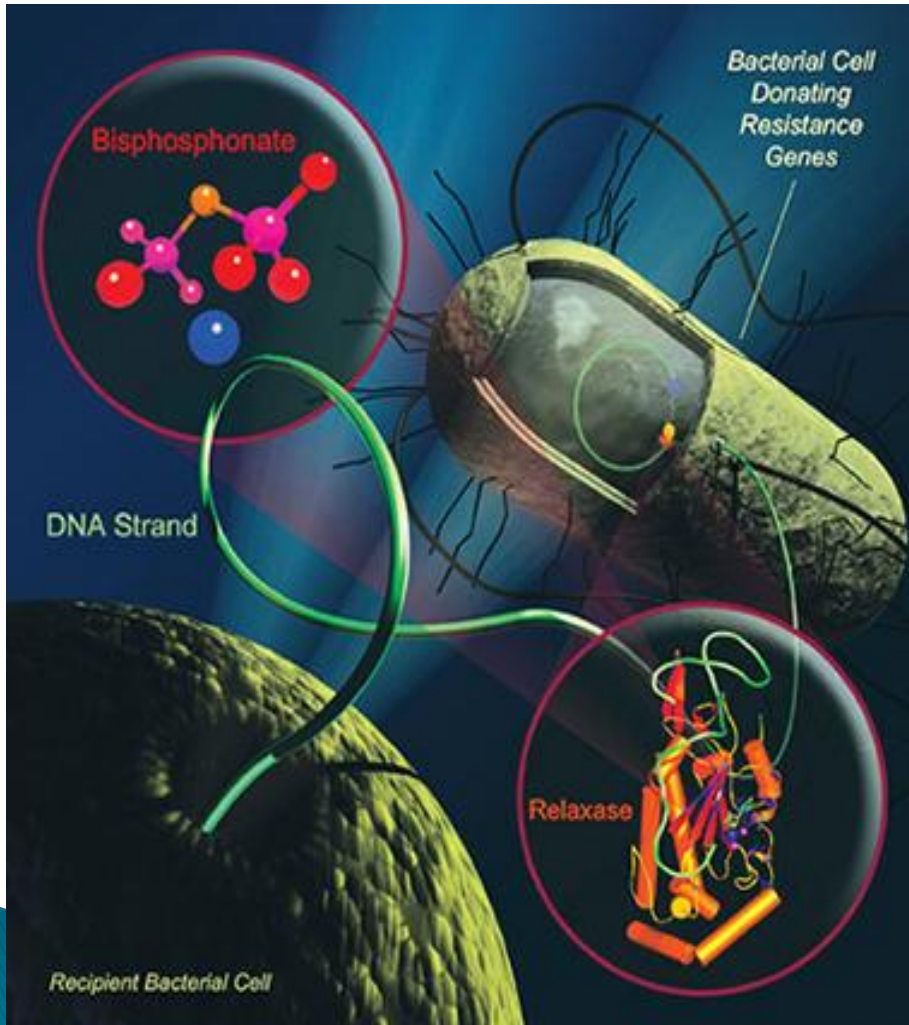


Directional Selection

- ▶ Selection that favours an increase or decrease in the value of a trait from the current population average

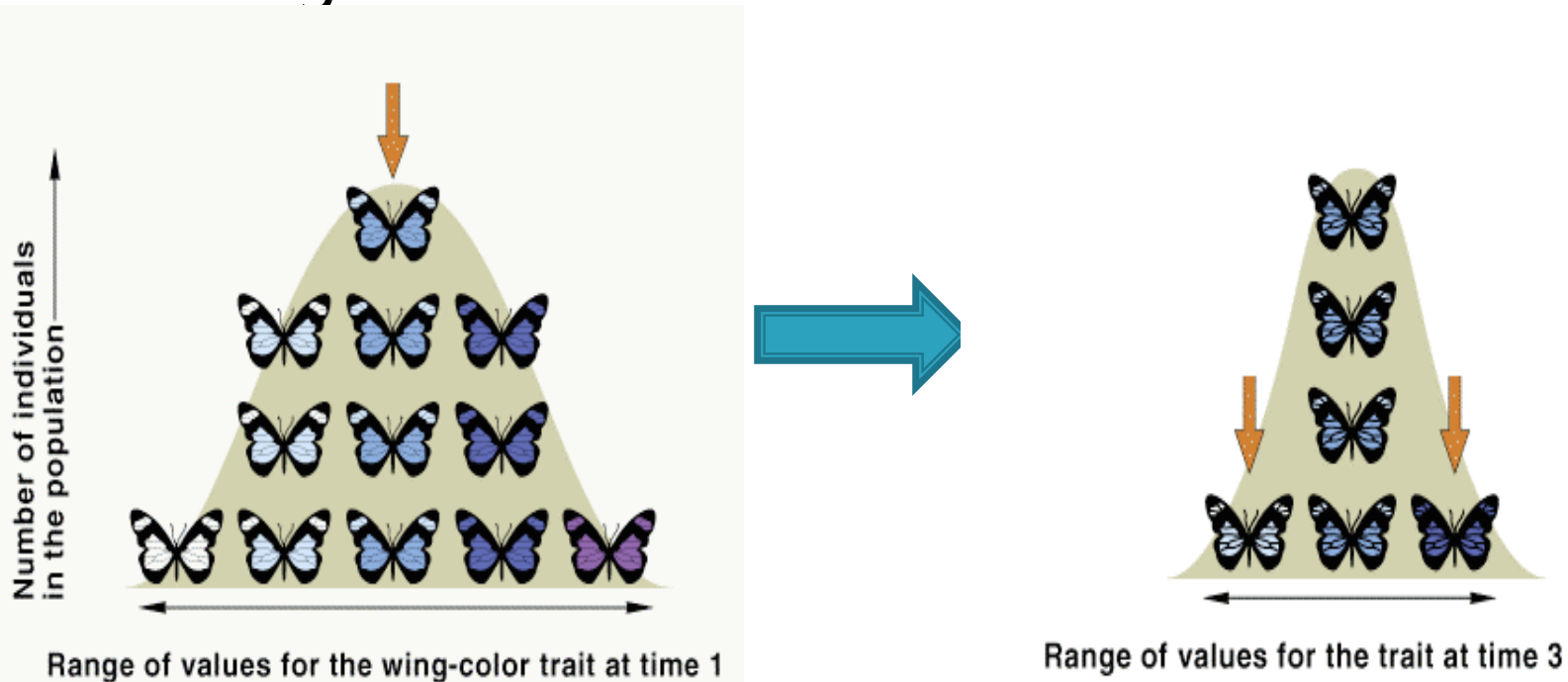


Directional Selection



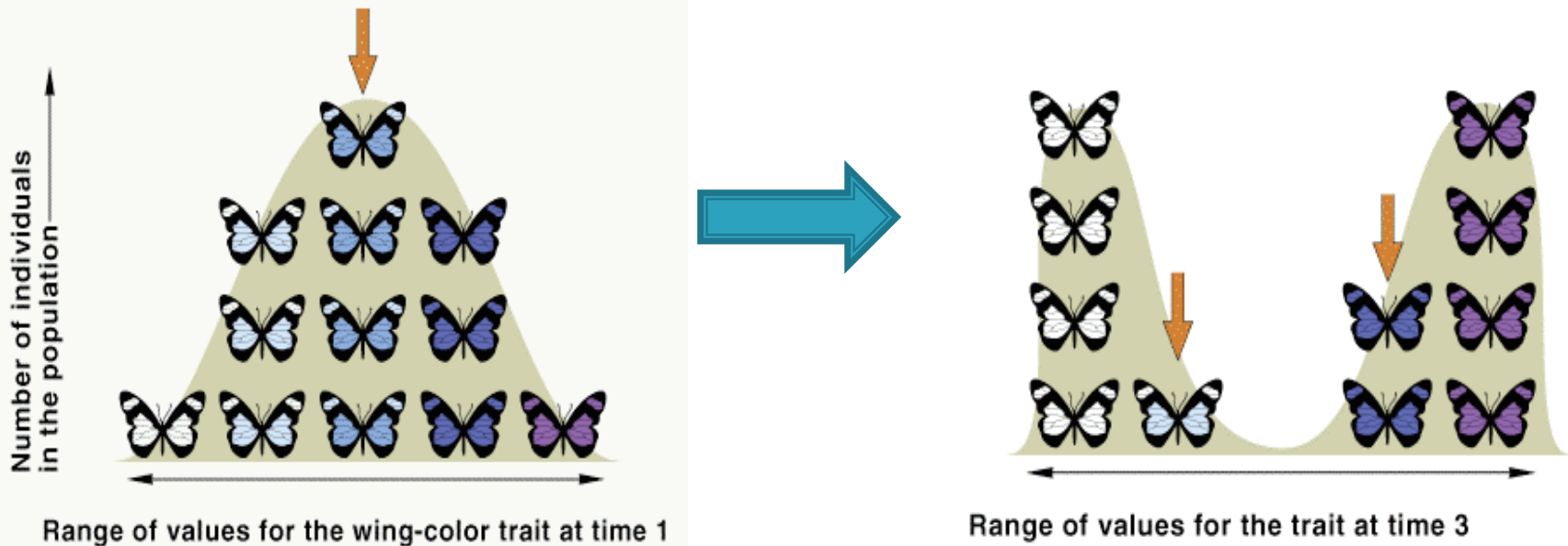
Stabilizing Selection

- ▶ Selection against individuals exhibiting traits that deviate from the current population average



Disruptive Selection

- ▶ Favours two or more variations of a trait that differ from the current population average



Disruptive Selection



A Human Example

- ▶ Some populations have adapted to living at extreme heights
- ▶ Able to survive despite low oxygen levels



Sexual Selection

- ▶ The favoring of any trait that specifically enhances the mating success of an individual




Artificial Selection

- ▶ A controlled, captive breeding process
- ▶ Occurs in captivity rather than in the wild
- ▶ Humans choose which individuals to breed that demonstrate a favorable trait



The Process of Artificial Selection

- ▶ 1) Choose a species that can be bred in captivity
 - ▶ 2) Breed a large number of individuals
 - ▶ 3) Choose a trait that you wish to favour
 - ▶ 4) Identify individuals that exhibit this trait most strongly
 - ▶ 5) Breed only these individuals to produce the next generation
 - ▶ 6) Repeat steps 4 and 5 over many generations
- 

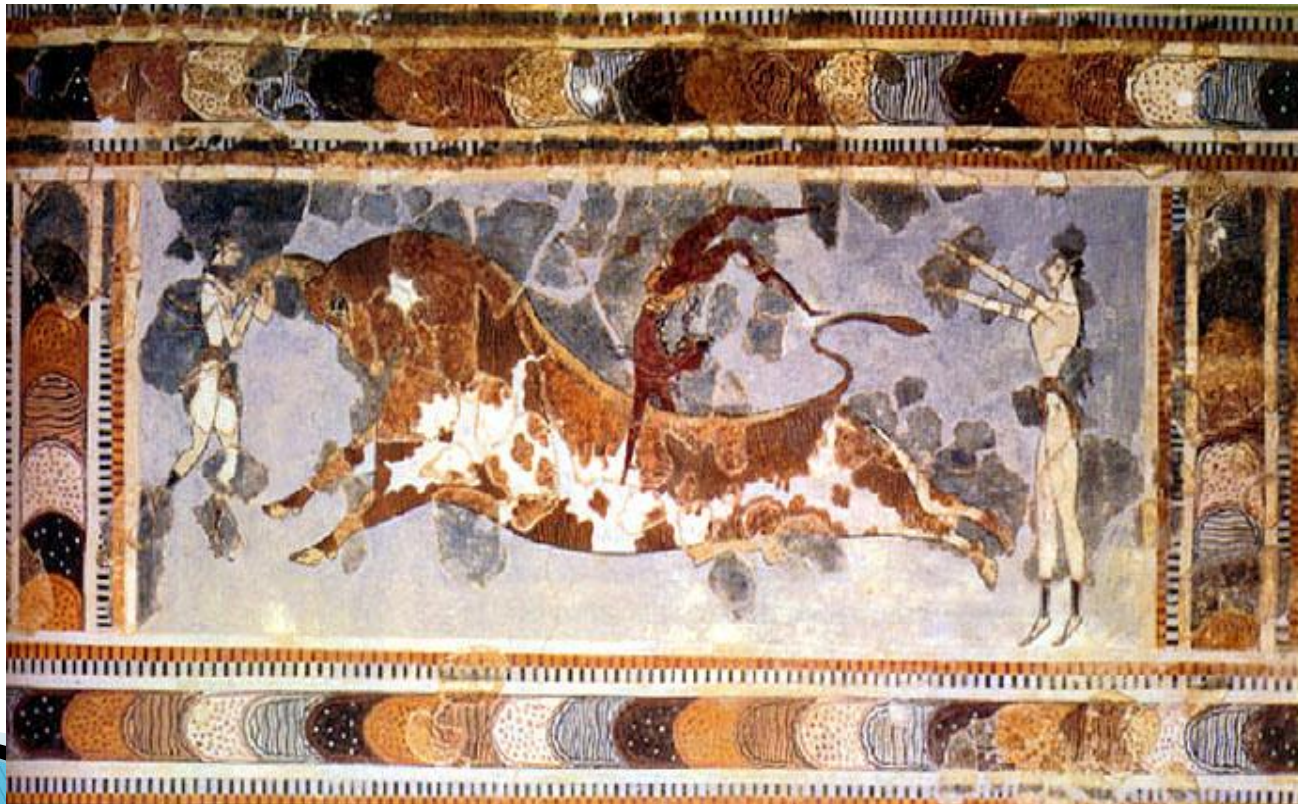
Artificial Selection in Plants

- ▶ Domestic crops are bigger and heartier than wild
 - Why might this be important?
- ▶ Selection process takes place over thousands of years – beginnings in the Fertile Crescent



Artificial Selection in Animals

- ▶ In animals, there are a number of features we many consider



Artificial Selection in Animals

- ▶ In animals, there are a number of features we many consider
 - Size
 - Muscle Mass
 - Fattiness
 - Temper

