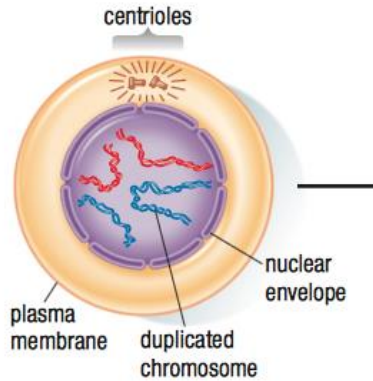


MITOSIS

Interphase and Replication

Each cell spends most of its life (90% of the time) in INTERPHASE, the period after mitotic division has formed a cell and before it divides again.

Diagram of a animal cell during interphase



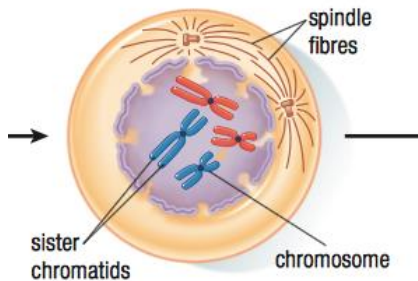
Interphase - Description

- _____ growth, _____
- _____ replication
- Duplicated chromosome attached by _____, creating _____

Stages of Mitosis in an animal Cell

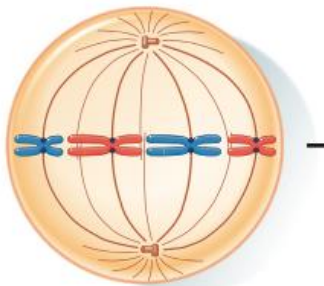
Mitosis:

Biologists describe mitosis as a series of four distinct stages: _____, _____, _____ and _____.



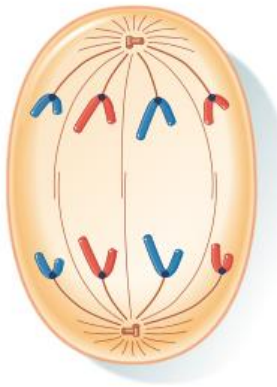
Prophase – Description

- Chromosomes become _____
- _____ move to opposite _____
- Formation of _____
- Nuclear membrane _____



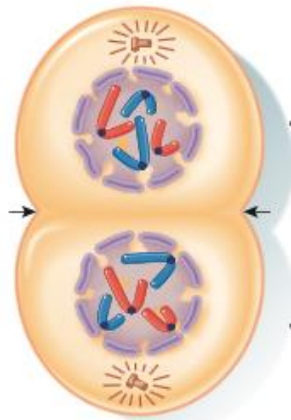
Metaphase - Description

- Spindle fibres _____ and _____ chromosomes
- Chromosomes pulled towards _____ of cell
- _____ align across _____ (middle)



Anaphase - Description

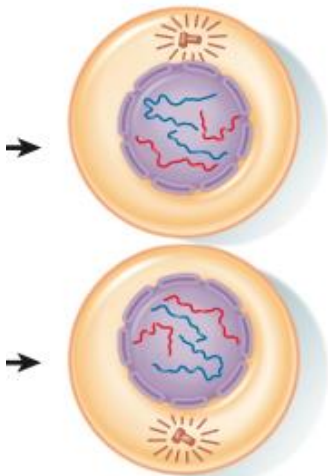
- _____ divide
- _____ move to _____
- If done correctly, there should be the _____
_____ of chromosomes at each _____



Telophase – Description

- Chromosomes reach _____
- Chromosomes begin to _____
- _____ dissolve
- _____ form
- _____ develops

Cytokinesis:



Cytokinesis – Description

- Immediately follows _____
- _____ divided into two new _____
- Two _____ cells
- Both enter _____