

**SBI 3C: MISTAKES IN MEIOSIS:**

**MISTAKES IN SEPARATION:**

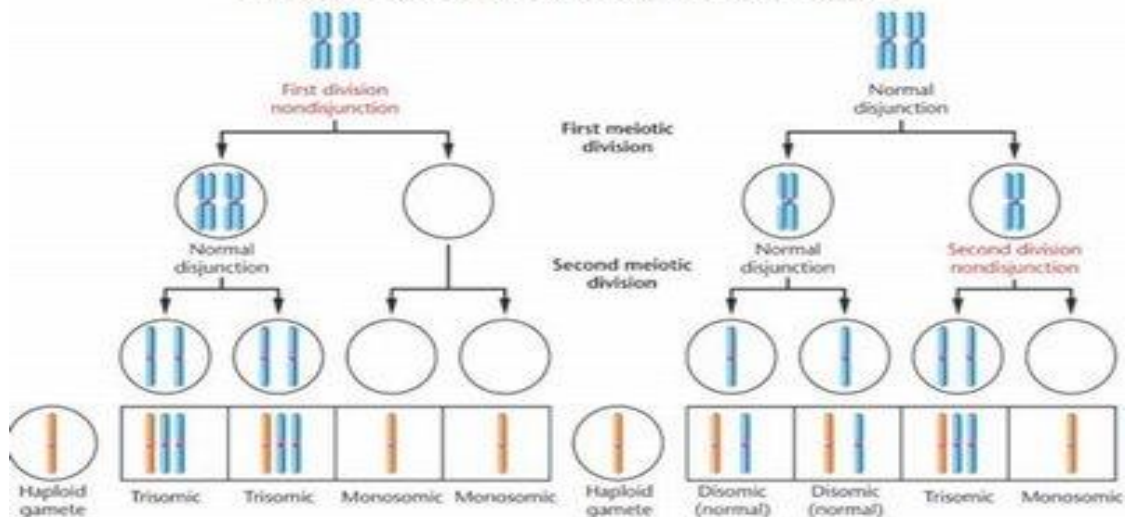
**Aneuploidy:**

- Error during \_\_\_\_\_
- Separation of \_\_\_\_\_ doesn't take place properly resulting in cells have too \_\_\_\_\_ or too \_\_\_\_\_ chromosomes
- Caused by: \_\_\_\_\_
  - Failure of \_\_\_\_\_ chromosomes to separate in meiosis \_\_\_\_
  - Failure of \_\_\_\_\_ to separate in meiosis \_\_\_\_

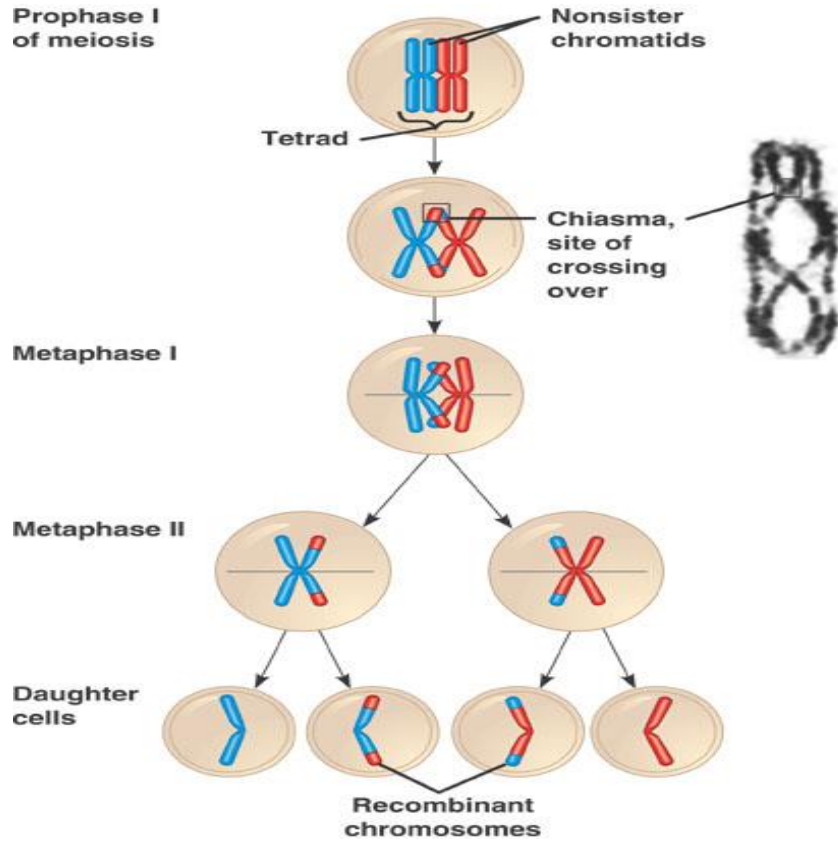
**EXAMPLES:**

- \_\_\_\_\_:
  - Sex cell missing \_\_\_\_\_ chromosome (in place of a homologous pair)
- \_\_\_\_\_:
  - Condition where there are \_\_\_\_\_ chromosomes than required (in place of a \_\_\_\_\_ pair)
- \_\_\_\_\_:
  - \_\_\_\_\_ of \_\_\_\_\_ of the chromosomes in a \_\_\_\_\_ that unites with a \_\_\_\_\_ gamete to produce 3 sets of \_\_\_\_\_ (\_\_\_\_\_)

**Nondisjunction results in variations in chromosome number**



**CROSSING OVER IN MEIOSIS:**



**MISTAKES IN CROSSING OVER:**

- Pieces of \_\_\_\_\_ information are \_\_\_\_\_ but do not \_\_\_\_\_ properly
- \_\_\_\_\_:
  - When exchanged information \_\_\_\_\_ reattach to the chromosome
- \_\_\_\_\_:
  - Segment of DNA \_\_\_\_\_ to chromosome but in the \_\_\_\_\_
- \_\_\_\_\_:
  - The exchanged information is \_\_\_\_\_ on the chromosome
- \_\_\_\_\_:
  - Movement of \_\_\_\_\_ from one chromosome to a \_\_\_\_\_ chromosome