

Bony Landmarks

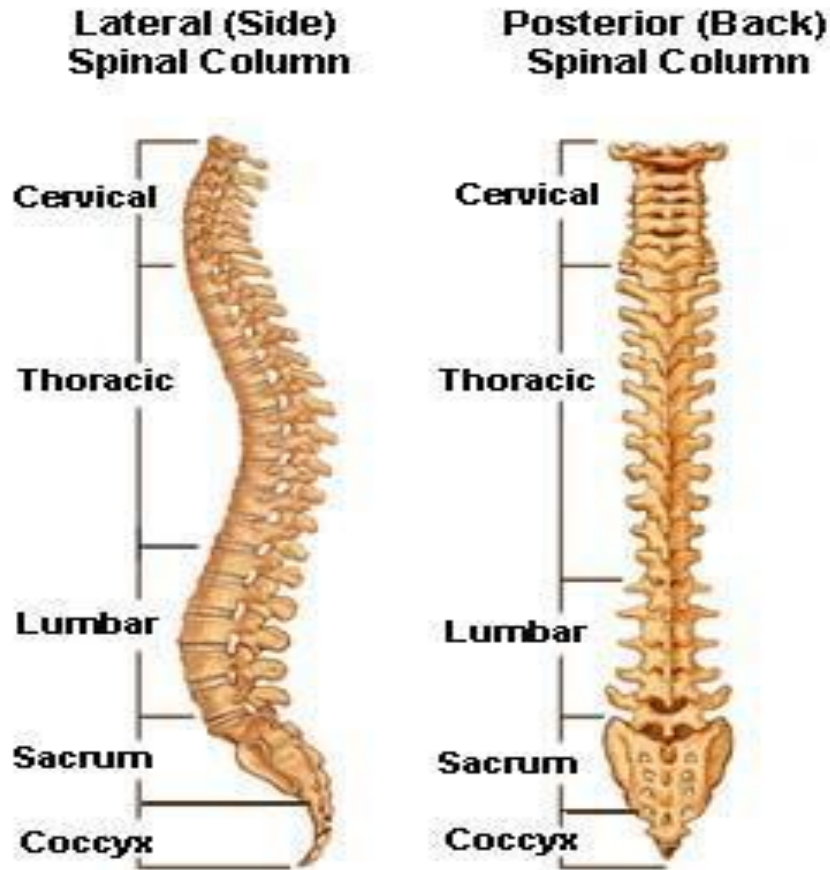
Bony Landmarks to Memorize!

We will group the bony landmarks by location, focusing on seven major bones/areas:

1. Vertebral Column

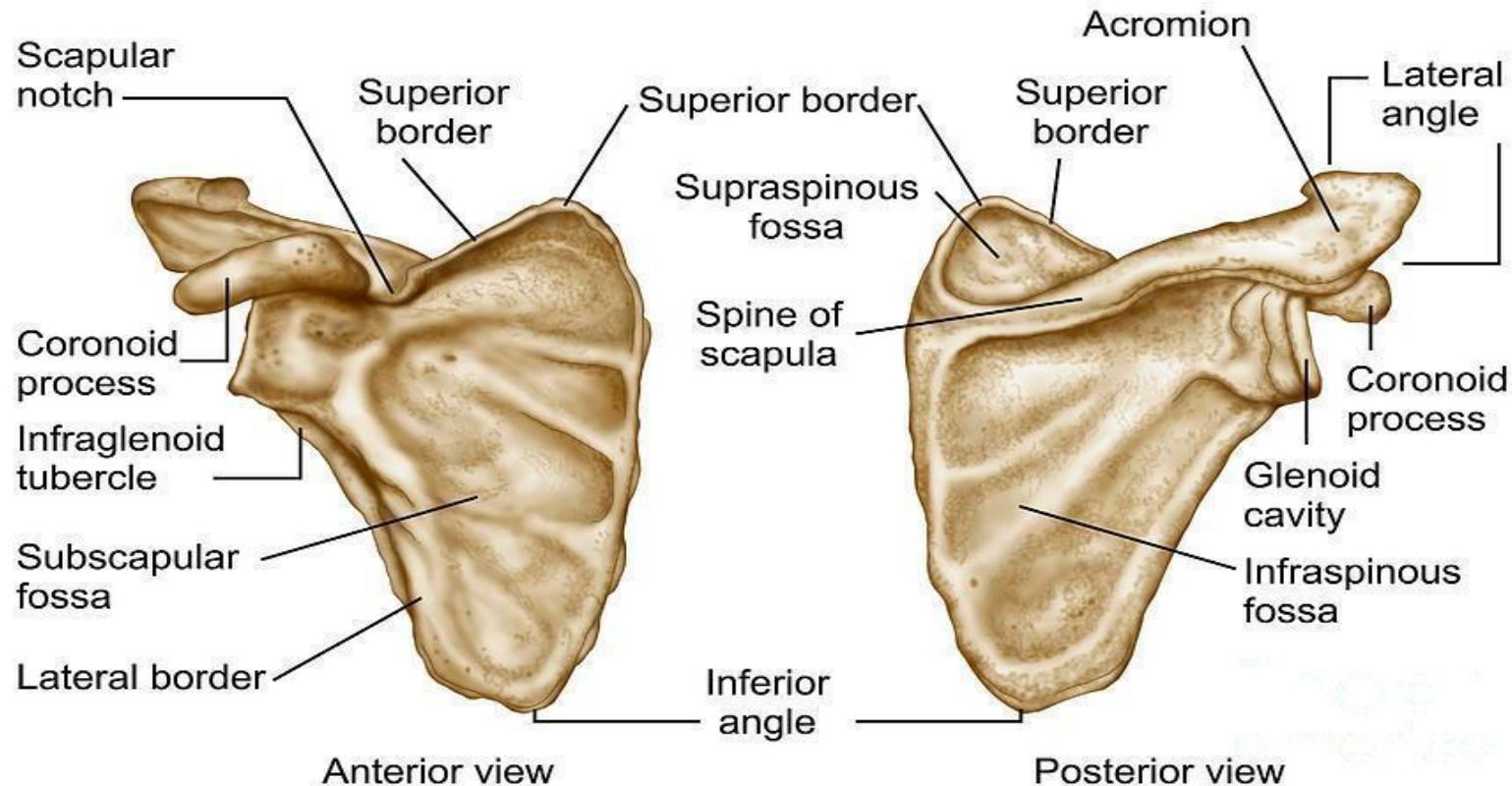
Landmarks:

Cervical, thoracic and lumbar vertebrae



2. Scapula

- Landmarks: Coracoid process, Acromion, Supraglenoid tubercle, Infraglenoid tubercle, Spine of scapula, Lateral border, Inferior/Superior angle, Medial border, Supraspinatus fossa, Infraspinatus fossa, Subscapular fossa



3. Humerus

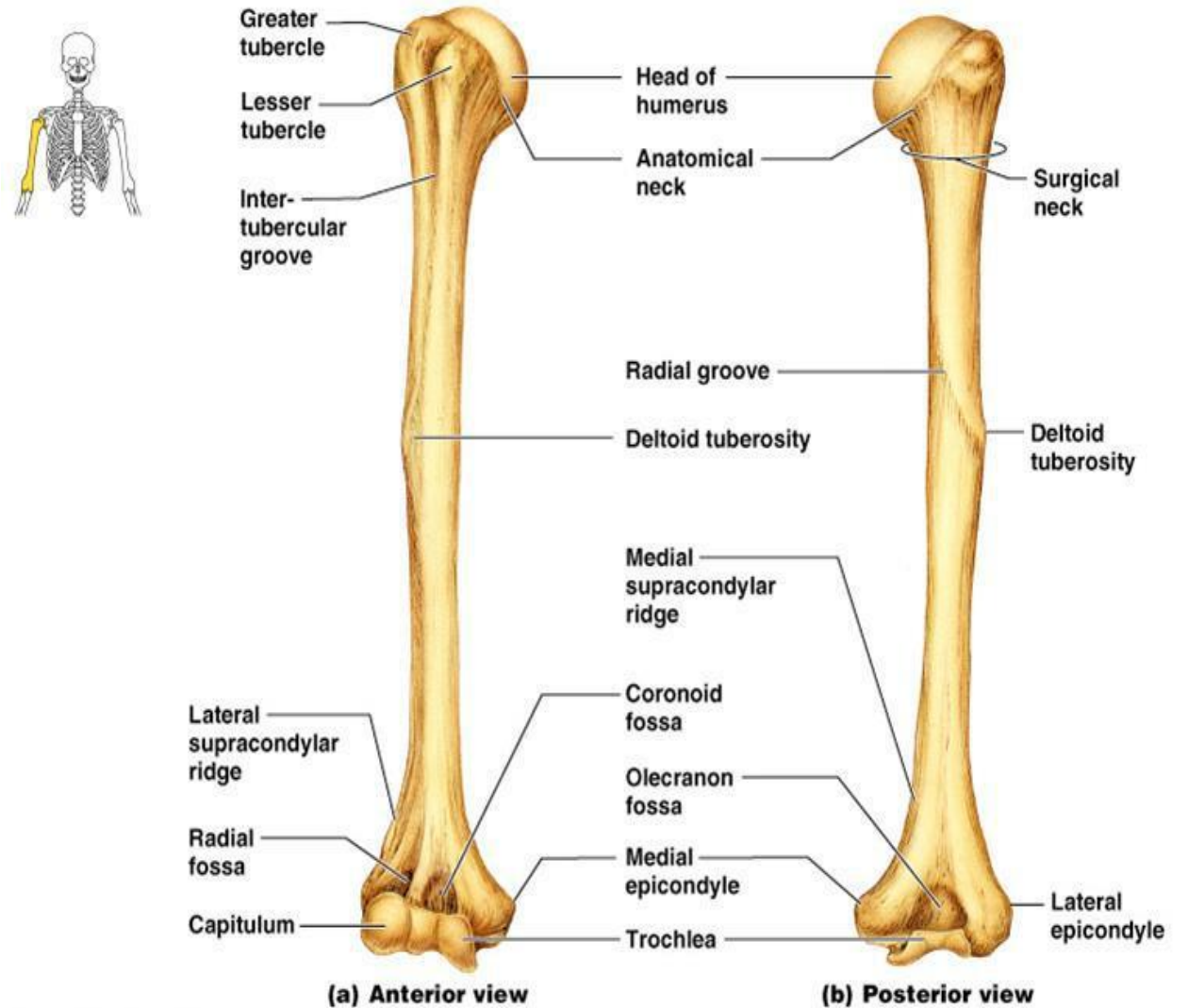
- Landmarks:

Greater/Lesser tubercle

Deltoid tuberosity

Medial epicondyle

Lateral epicondyle



4. Radius and Ulna

- Landmarks:

Radial tuberosity

Head of radius

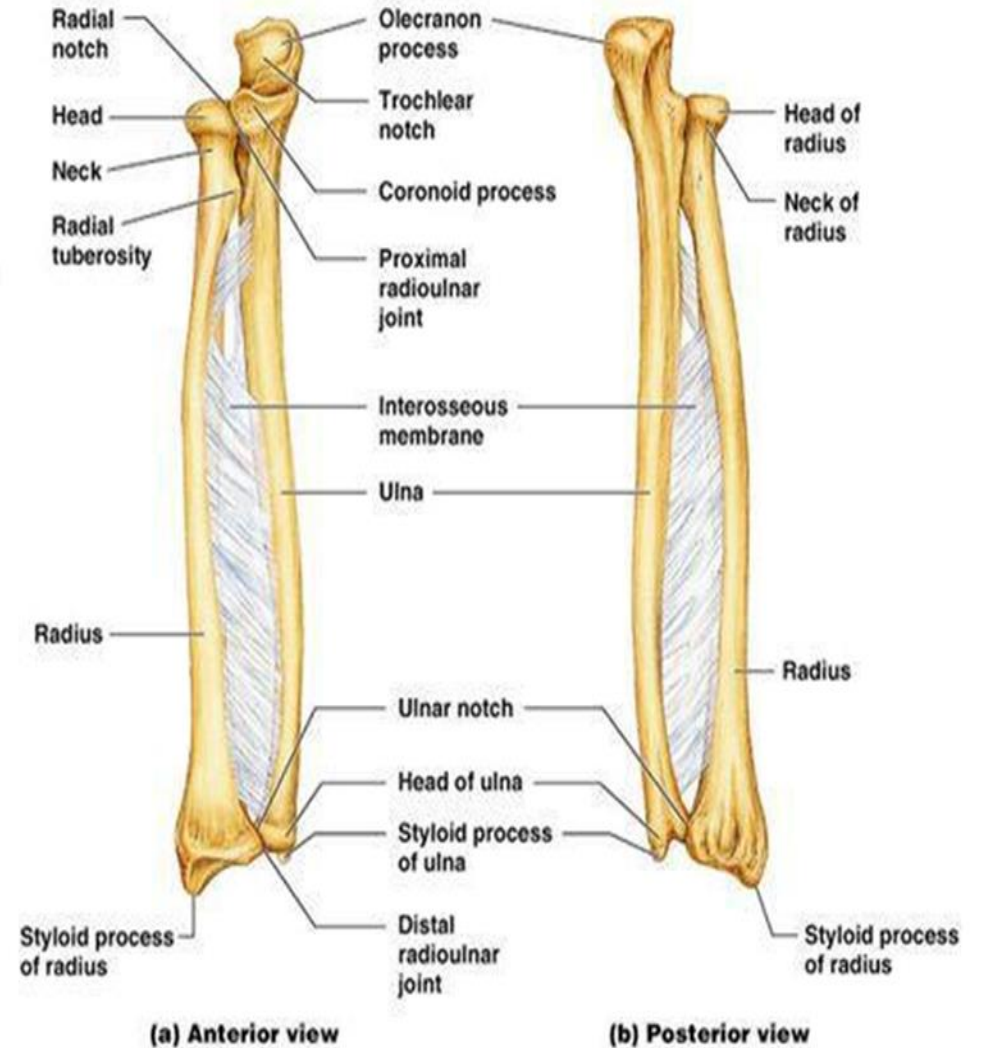
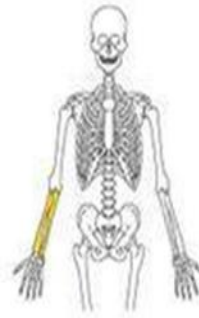
Radial notch of ulna

Olecranon

Olecranon process

Coronoid Process

Styloid Process.



5. Pelvic Girdle

- Landmarks:

Iliac crest

Sacrum

Anterior superior iliac spine

Anterior inferior iliac spine

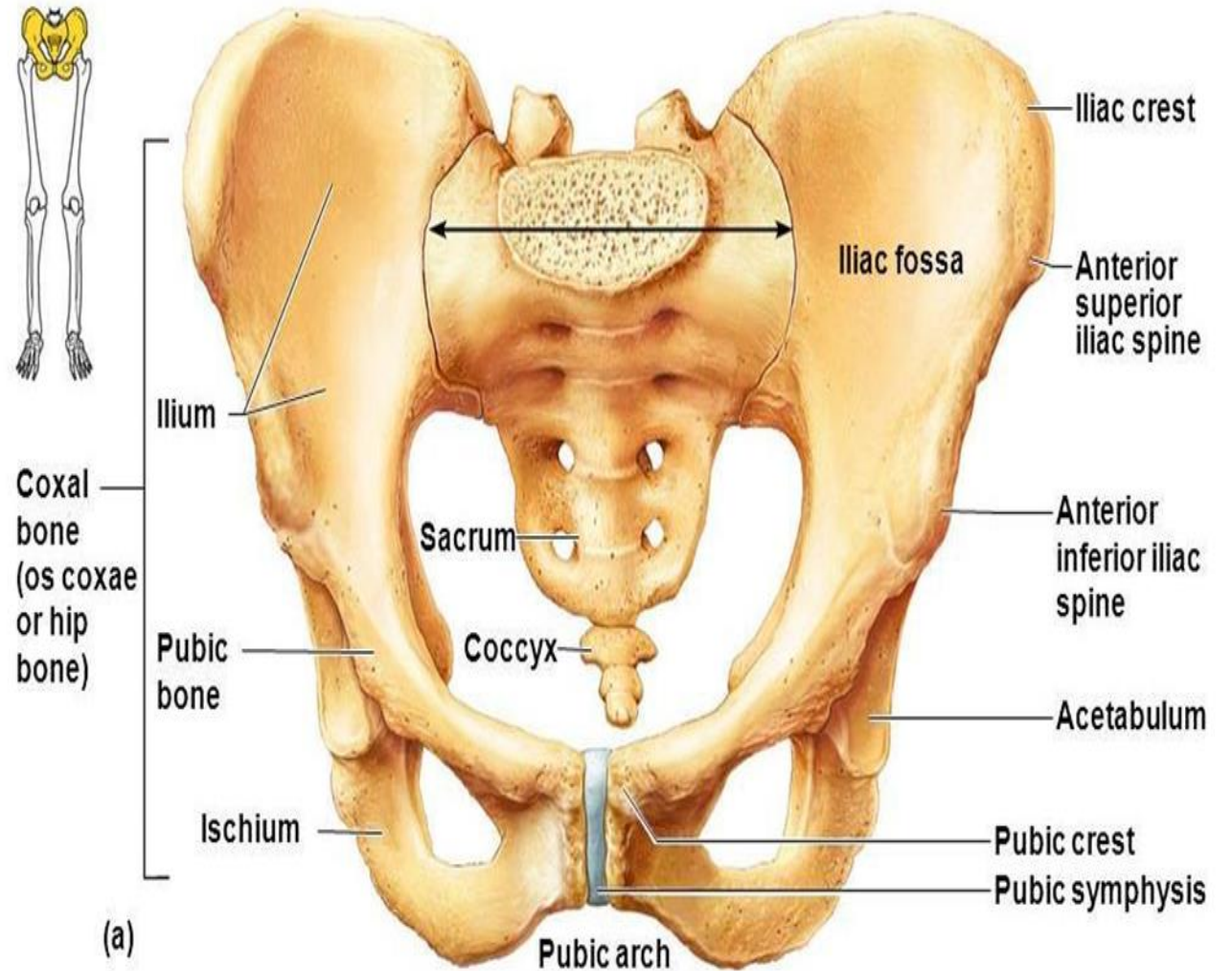
Pubic crest

Pubis

Ilium

Ischial tuberosity

Acetabulum



6. Femur

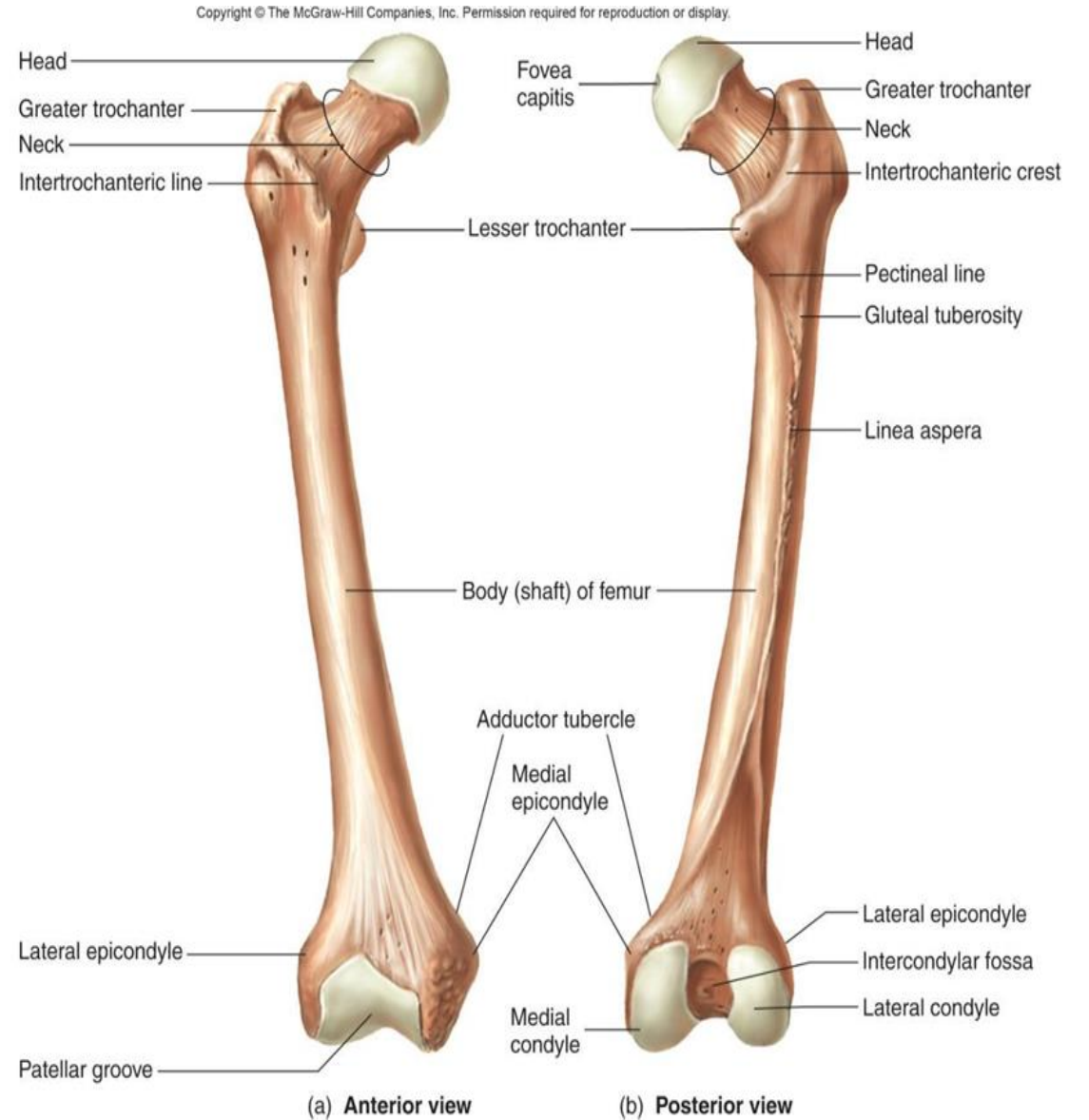
- Landmarks:

Surface

Greater/Lesser trochanter

Medial/Lateral condyle

Linea aspera



7. Tibia and Fibula

- Landmarks:

Head of fibula

Tibial condyle

Medial condyle of tibia

Tibial tuberosity

